



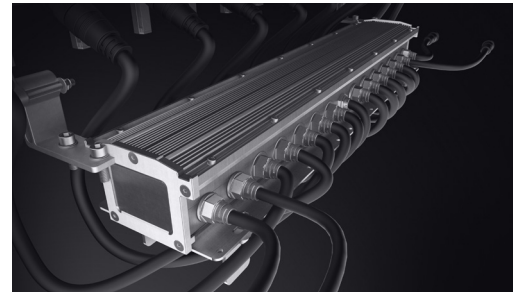
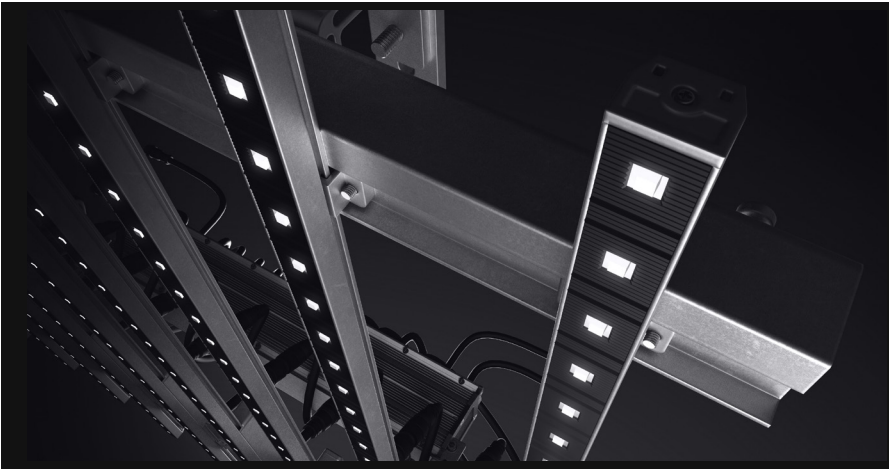
CLRVision

Clear, creative, impact.

-
- Transparent
 - 3 - 10mm Pixel Pitch
 - Front or Rear Serviceable
 - Indoor
 - Sleek Tileable Design
 - 100K Lifetime

Nanolumens' CLRVision uses transparent mesh technology to deliver picture perfect visuals that allow your creativity, and your brand, to stand out in high-traffic spaces. With a wide range of pixel pitches from 3.8-10mm and 3000+ nit brightness, CLRVision creates high-impact views in any space with minimal effect on the view from the other side.

Our CLRVision displays are made with the same high quality components you've come to expect from Nanolumens, to ensure your brand message is as clear today as in the years to come. And servicing is no hassle, as each individual LED strip can be easily serviced from the front or rear of the display.



Why Nanolumens

At Nanolumens, we've set our sights — and our standards — high when it comes to LED and service. We leverage the best of technology to meet everyday needs and enable digital transformation. Our promise to you is an unsurpassed first and lasting experience.

NIXEL™ to Pixel Warranty

Your display is engineered to pass the ultimate test: time. We use high-performing materials like gold wiring to ensure your display is a worthwhile investment. Our Warranty coverage starts pixel one ensuring your display is covered 100% from our Atlanta headquarters.

Benefits

High Brightness

3000+ nit brightness elevates your creativity and messaging to be visible in demanding spaces.

Variable Transparency

Transparent mesh technology delivered in a wide range of pixel pitches from 3.8 - 10mm, allows your display to have clarity and high resolution for up close and personal viewing.

Simplistic Service

Each individual LED strip can be easily serviced from the front or rear making service simple.

High Quality Component

High quality components ensure that your massive statement is as clear today as in the years to come.

SPECIFICATIONS: CLRVision

Pixel Pitch	3.9 x 7.8	6.2 x 6.2	7.8 x 7.8	10.4 x 10.4
Transparency	43%	32%	43%	54%
Unit Size (W x H) ^[1]	39.37 x 19.68 in 1,000 x 500 mm			
Unit Resolution	256 x 64	160 x 80	128 x 64	96 x 48
Watts/ft ²	5112 Max 15.34 Avg	5112 Max 15.34 Avg	5112 Max 15.34 Avg	5112 Max 15.34 Avg
Weight/ft ²	1.49 kg 3.28 lbs			
Max Brightness (standard)	3,000 nits	2,000 nits		3,000 nits
Viewing Angle Max ^[2]	160h / 140v			
Viewing Angle L50 ^[2]	140h / 140v			
Serviceability	Front and Rear			
Indoor / Outdoor	Indoor only			
Input Voltage (VAC)	110/120/208/220/240 VAC - Single Phase			
Output Bit Depth	8-bit Standard (16.7 Million) / Up to 10-bit (>1 Billion)			
Lifetime	>100,000 Hours			
Warranty	3 year standard/6 Year Extended			

1 - Dimensions are cabinet only. Does not include any mounting or décor if required

2 - L50 is objective measured angle at which brightness decreases to 50% of max brightness

