



NXT Series

When organizations require impactful, large-format, indoor digital signage or meeting room displays on a budget, Nanolumens' entry-level NXT Series direct view LED video wall displays are the wise choice. These versatile displays delivering stunning image quality, reliable performance, and streamlined installation at unmatched value.

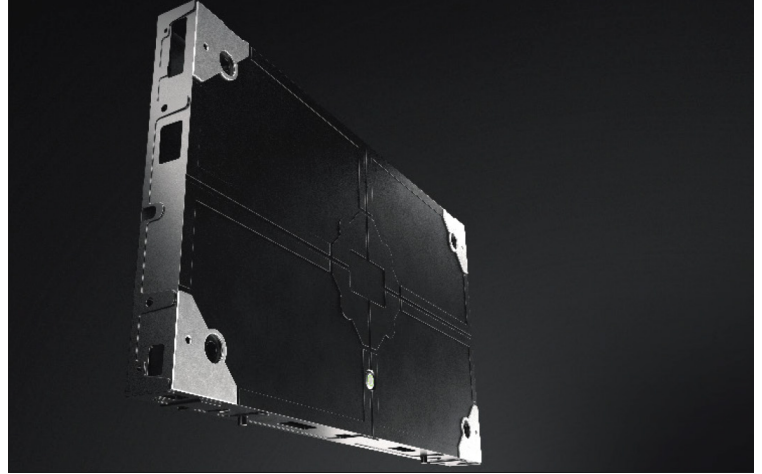
-
- COB and SMD Models
 - 0.9 – 3.75mm Pixel Pitches
 - 2-Year 100% Warranty
 - TAA Compliant
 - 100,000-Hour Life
 - 16:9 Format
-

A Breakthrough in Affordable, High Performance Visual Solutions

The Nanolumens NXT Series offers both COB and SMD technology options, giving you the flexibility to choose the right fit for your performance needs. Whether you prioritize ultra-durability and close-viewing performance with COB, or the proven versatility of SMD, NXT delivers tailored display solutions without compromise.

Designed with seamless integration in mind, NXT displays feature a simple, cable-less, 16:9 cabinet format.

Whether you're upgrading an existing video wall display or building something new, the NXT Series delivers Nanolumens' exceptional visual performance at a budget-friendly price.



Stress-Free Structure

To facilitate low-impact installation that speeds deployment, SMD LED model displays require no additional mounting infrastructure. To ensure miniLED COB video wall flatness, the displays are compatible with mounting solutions from leading mount providers.

NIXEL™ to Pixel Warranty

Your display is engineered to pass the ultimate test: time. We use high-performing materials to ensure your display is a worthwhile investment. Our warranty coverage starts pixel one, ensuring your display is covered 100% from our Atlanta headquarters.

Benefits

LEGENDARY QUALITY

Value doesn't have to mean low quality. Our NXT displays are built with Nanolumens performance and quality.

CABLE-LESS

NXT LED modules are cable-less making replacement as easy as a snap in and out, saving in time and money.

16:9 FORMAT

Take the complexity out of content creation and video wall design with our simple 16:9 format cabinets ideal for traditional Full HD or 4K resolution content.

VERSATILE MOUNTING

Mounting NXT video wall displays is simple as COB models are compatible with popular mount providers and SMD models require no third-party mounts at all.

Cabinet Specifications	MiniLED COB			SMD				
Pixel Pitch	0.93 mm	1.2 mm	1.5 mm	1.2 mm	1.5 mm	1.8 mm	2.5 mm	3.75 mm
Size (W x H) {1}	600.0 x 337.5 mm (23.62 x 13.29 in)			600.0 x 337.5 mm (23.62 x 13.29 in)				
Resolution	640 x 360	480 x 270	384 x 216	480 x 270	384 x 216	320 x 180	240 x 135	160 x 90
Depth {2}	31.5 mm / 1.25"			50 mm / 1.97"				
Watts / ft²	47 Max / 15.4 Avg	39 Max / 12.88 Avg	42 Max / 13.8 Avg	58 Max / 19.3 Avg	50 Max / 16.33 Avg	55 Max / 18.3 Avg	58 Max / 19.3 Avg	58 Max / 19.3 Avg
Weight / ft²	3.81 kg / 8.40 lbs			2.34 kg / 5.2 lbs				
Contrast	6000:1			≥4000:1				
Max Brightness (standard)	800 Nits			800 Nits				
Viewing Angle Max {3}	178° horz / 178° vert			178° horz / 178° vert				
Viewing Angle L50 {3}	168° Horz / 163° Vert			170° Horz / 170° Vert				
Curveable	Faceted			Faceted				
Mount Required?	Yes			No				
Serviceability	Front			Front				
Indoor / Outdoor	Indoor			Indoor				
Glue-on-Board (GOB) Ruggedization Option	Yes			No				
Input Voltage (VAC)	110/120/208/220/240 VAC – Single Phase			110/120/208/220/240 VAC – Single Phase				
Output Bit Depth {4}	8-bit Standard (16.7M) / Up to 10-bit (>1B)			8-bit Standard (16.7M) / Up to 10-bit (>1B)				
Lifetime	>100,000 hours			>100,000 hours				
Warranty	2 yr standard / 3 yr extended			2 yr standard / 3 yr extended				

{1} Cabinet/module footprint, standard décor/frame adds 1/2" to overall system height and width

{2} Cabinet/module depth, standard décor/frame depth adds 1/8" to overall system depth

{3} L50 is objective measured angle at which brightness decreases to 50% of max brightness.

{4} Display process at up to 14 bits per channel internally. Final output bit depth is limited by content source capabilities. *Power is estimated