



CAPTIVATE SERIES™

A Complete LED Display Solution

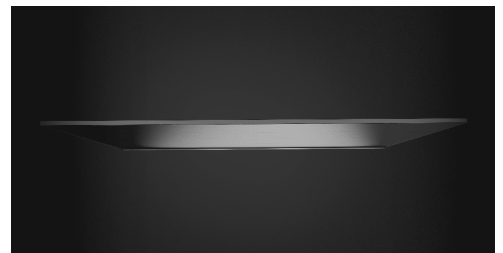
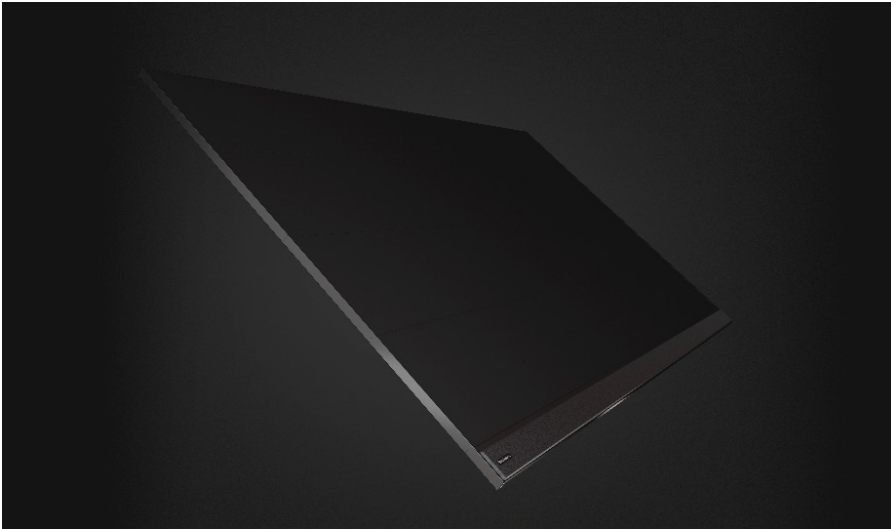
Try our new 4K model for brighter colors, deeper contrast and sharper images.

-
- All-in-One Solution
 - 2.0" System Depth
 - Easy Set Up
 - Native HD and 4K Resolutions
 - Available in 4 Unique Sizes
 - White Glove Installation Available



Aimed at simplifying installation and easing user control, Captivate was designed and intended for any organization looking for an easy to integrate dvLED solution for Corporate Meeting Rooms, Houses of Worship, Higher Education Facilities, and much more.

Captivate is a complete solution that eliminates the need for additional components and eases the design and installation costs typically associated with dvLED displays. The series is available in four unique sizes, (120", 150", and 180") in full HD resolution and 165" in full 4K UHD, for exceptional visual performance, brightness, and clarity.



Why Nanolumens

At Nanolumens, we've set our sights — and our standards — high when it comes to LED and service. We leverage the best of technology to meet everyday needs and enable digital transformation. Our promise to you is an unsurpassed first and lasting experience.

NIXEL™ to Pixel Warranty

Your display is engineered to pass the ultimate test: time. We use high-performing materials like gold wiring to ensure your display is a worthwhile investment. Our Warranty coverage starts pixel one ensuring your display is covered 100% from our Atlanta headquarters.

Benefits

Turnkey Solution

All-in-one solution that combines display, mount, and remote control into one easy to install unit.

HD and 4K Resolutions

Simple 16:9 formats range from 1080p up to full 4K UHD.

Perfectly Tailored Sizes

Four unique sizes ranging from 120-180" to select the perfect size for your environment. Now available in 120", 150" and 180" in full HD resolution and 165" in full 4K UHD.

Easy Integration & White Glove Service

Installation is a breeze whether you are installing on a wall or with the optional rolling floor stand.

SPECIFICATIONS: CAPTIVATE SERIES

Display Size	CAPTIVATE 120-HD	CAPTIVATE 150-HD	CAPTIVATE 180-HD	CAPTIVATE 165-UHD
SKU	NLID-20004	NLID-20008	NLID-20009	NLID-40000
Architecture	3 in 1			COB
Display Resolution	1920 x 1080 (HD)			3840 X 2160 (UHD)
Display Diagonal (WxH)	120"	150"	180"	165"
Pixel Pitch	1.3	1.7	2.0	0.9
Overall Size (WXH)	105.4 X 64.1 in 2678 x 1630 mm	131.6 x 78.9 in 3344 x 2004 mm	157.8 x 93.6 in 4010 x 2379 mm	144.7 x 85.7 in 3674 x 2175mm
System Depth	2.0 in / 50.8 mm			1.5 in / 38.1 mm
Weight	255 lbs / 115 kg	365 lbs / 165 kg	474 lbs / 215 kg	441 lbs / 200 kg
Max Brightness (standard)	600 nits			550 nits
QTY 120 VAC Circuits	1	2		
Max Power (Watts)	1660 Max 664 Avg	2574 Max 1029 Avg	3000 Max 1350 Avg	2770 Max 1247 Avg
Viewing Angle	160 horizontal 160 vertical			170 horizontal 170 vertical
Curvable	No			
Serviceability	Front			
Indoor/Outdoor	Indoor			
Input Voltage (VAC)	120/ 208 / 220/ 240 VAC			
Output Bit Depth	8-bit Standard (16.7 Million) / Up to 10-bit (>1 Billion)			
Lifetime	>100,000 hours			
Remote Control	Yes			
Audio	Yes			
HDMI Inputs	3 (1 external, 2 internal)			
Floor Stand Part #	NLTK-40000		Special Order	
Operating Temperature	Operating: 0 to 50C, Non Condensing Humidity			

